

better together
SOUTH RIBBLE PARTNERSHIP



**Partnership Summary 2014/2015
for South Ribble Borough Council
Scrutiny Committee**

June 2015

Report: Compiled for South Ribble Scrutiny Committee, February 2015

For further information regarding this report please contact:

Howard Anthony
South Ribble Partnership
Civic Centre
West Paddock
Leyland
Lancashire
PR25 1DH





Our Partners....



Contents

Foreword	5
About Us	6
Overview of South Ribble Partnership	6
OUR PRIORITIES	6
Partnership Structure	7
Constitution and Structure	7
Appointments	7
Communication	8
Newsletters	8
Social Media	8
Forward Magazine	8
Finance	9
Performance Reward Grant	9
Partnership Staffing	9
Income to the Partnership	10
Future Income	10
Projects	11
Key Projects Summary	12
Partnership's Supporting Role	12
Big Do	13
South Ribble Community Awards	13
Community Bids Fund	14
Funded Projects in 2014	14
Next Steps & Future Challenges	16
In Development	16
Appendix A. Partnership Projects Summary	17
Appendix B – Sustainable Community Strategy Work Programme	20
Appendix C – Community Bids Fund Projects List	21
How to get in touch	23



Foreword

I am pleased to introduce our Partnership Summary 2014/15, which sets out what South Ribble Partnership has achieved since we last reported to South Ribble Borough Council's Scrutiny Committee in November 2013.

It has been a busy time and one that has seen a great deal of change for the Partnership.

Our partners are all facing difficult times; continuing austerity measures and budget reductions require us to challenge ourselves and think differently about how we continue to deliver services for the local community.

We see austerity as an opportunity, not for what we can do as a single organisation, but as a network of partners.

You will see in this report, what we are doing to constructively challenge how we and our partners work, and how we can continue to deliver the services needed by the community we serve.

We have continued to support and fund Community Bids, up until 2016. We recognise the continuing need to provide financial support to some of those fantastic community groups we are lucky to have in South Ribble.

We have also continued to work closely with the My Neighbourhood Team at South Ribble Borough Council. The Partnership has provided funding and been active in helping them secure additional funding to support the delivery of the Neighbourhood Plans, as well as providing advice and forging new relationships with local groups and agencies.

The strain on resources each of our partners face has not weakened their resolve, as they continue to recognise more than ever the importance of partnership working; achieving better outcomes for our local communities here in South Ribble.



Claire Foreman
Chair of South Ribble Partnership



About Us

Overview of South Ribble Partnership

South Ribble Partnership is the Local Strategic Partnership for South Ribble. We bring together people from across the public sector, businesses and voluntary and community organisations with an aim to deliver better services in South Ribble, based on what local people want. We are committed to working efficiently and effectively, ensuring value for money and developing new and better ways of working together for the benefit of local people and communities. This is summarised by our vision:

“Working better together to make South Ribble and its communities great places to live, work, visit & play – places to be proud of and places where everyone has equal opportunity to contribute and to reach their full potential”

The Partnership’s work is guided by South Ribble’s Sustainable Community Strategy¹. This Strategy sets out a clear vision for South Ribble and provides a framework for how we can work better together to improve local services and quality of life for everyone in South Ribble.

The strategy is focussed around five key priority areas:

1. **Supporting people & communities**
2. **Growing a prosperous economy**
3. **Developing healthy communities**
4. **Maintaining our safe neighbourhoods**
5. **Protecting our environment and creating a sustainable Borough**

Our partners work together with local communities to deliver innovative projects that contribute to our shared vision and priorities for South Ribble.

The priorities that the Partnership has been focused on in the past year and will remain so for the coming year, were identified and agreed following consultation with stakeholders and partners at our annual general meeting in 2013.

OUR PRIORITIES



Impact of City Deal

Work with communities to assess the impact of City Deal for residents, businesses and local organisations and services.

Ensure that the City Deal delivers real benefit to local people; providing them with access to education, skills and employment and a strong, vibrant community.



Supporting the Voluntary, Community and Faith Sector

Work with the Voluntary, Community and Faith sector to develop a coherent approach to;

- Volunteering
- Knowledge Sharing
- Reducing duplication
- Supporting closer joint working



Health: Care Close to Home

Work with local service providers and communities to focus on early intervention and care close to home. Build upon and develop existing services; giving due consideration to opportunities and referrals to non-medical interventionist options.

¹ Appendix 1



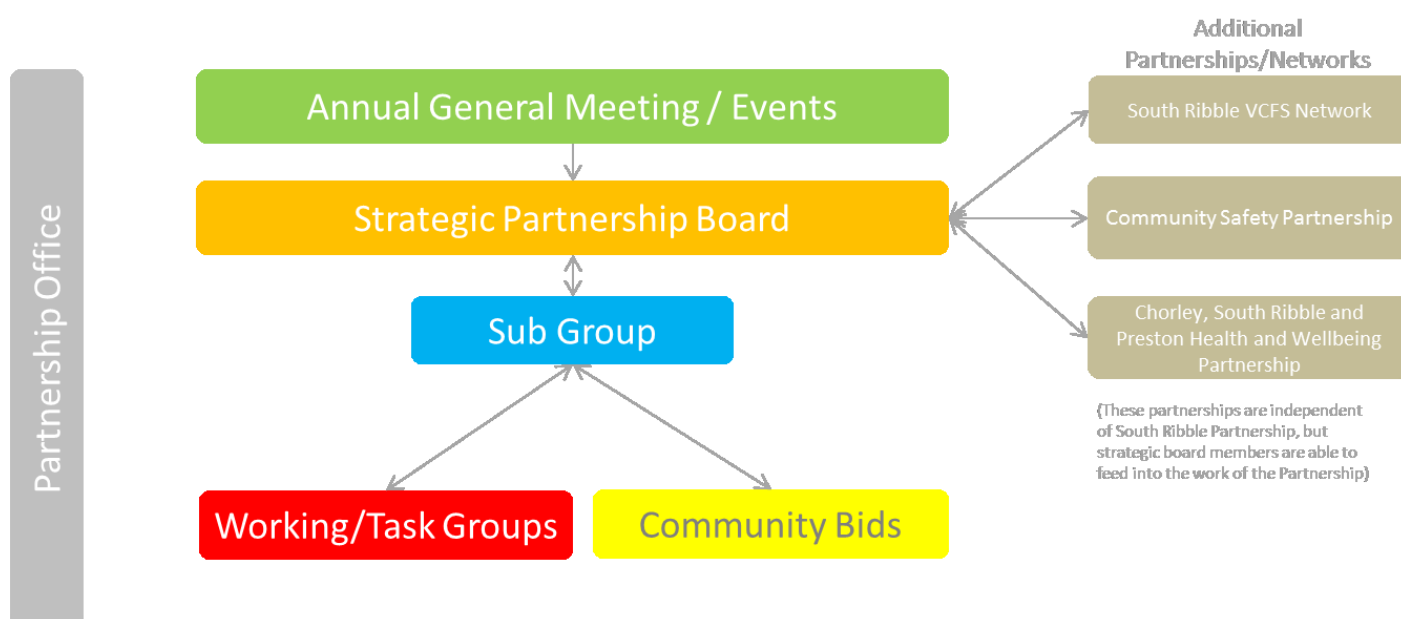
Partnership Structure

Constitution and Structure

When we last came to Scrutiny, the Partnership reported that it was streamlining the number of Strategic Board meetings and focusing the delivery of key projects through the Sub Group.

Our amended structure has reduced the number of meetings of the Strategic Board from 6 to 4, annually. This enables the board to set the strategic direction whilst leaving the Sub Group to implement strategy and manage the delivery of projects. This structure has been in place over the past year and is working effectively.

Our approach enables us to engage and work with the right partners on an ad-hoc basis. The diagram below shows the Partnership structure:



Appointments

At the AGM in November 2014 Claire Foreman, Deputy Principal Runshaw College, was confirmed as Chair of the Partnership. Councillor Margaret Smith, Leader South Ribble Borough Council, was confirmed as Vice Chair. Both of these appointments are for tenure of 2 years.

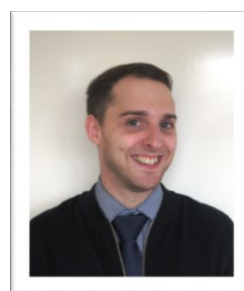
Howard Anthony has managed the partnership since 2013, and a new member of the team joined us in June 2015 to support the development of the South Ribble Voluntary Community and Faith Sector (VCFS) Network.



Cllr Margaret Smith
Vice Chair



Claire Foreman
Chair



Howard Anthony
Partnership Manager



Roz Catlow-Patterson
VCFS Support Officer



Communication



Communication continues to be an area in which the Partnership actively works to grow and develop. It is important that the messages we communicate to stakeholders and the wider community remain clear and consistent; supporting the work of both partners and the Partnership.

Newsletters

We rely on our partners to help disseminate our messages and promote the work of the Partnership. We achieve this through regular updates which are provided to stakeholders and partnership members via our e-newsletter; this is distributed to all partner organisations, all South Ribble Borough Council elected members and to a wider number of subscribers. We currently have contact details for over 700 individuals who have asked us to keep in touch with Partnership news or future events.

Social Media

The Partnership has two main social media outlets; Facebook and Twitter.



Our Facebook account, continues to grow and as well as being used to post messages from the Partnership about events and projects, it is increasingly being used to share news and updates from other partners.



The Partnership also operates a twitter account. This does require daily updates. The Twitter account has also grown and we are now using it more effectively to promote partnership events as well as share messages from partners.

Forward Magazine

We continue to be appreciative of the support provided to us from South Ribble Borough Council; in particular for the space provided to us in the Forward magazine.

This has allowed us to share important messages with all the residents of the borough such as the promotion of the South Ribble Community Awards and celebrating the strong culture of volunteering and giving that exists within our local communities.

12 FORWARD Autumn 2014 www.southribble.gov.uk

Local heroes rewarded

THE winners of the South Ribble Community Awards for 2014 have been revealed. Nominations for the awards are in their second year and honour people and organisations from across the borough that go the extra mile for their communities.

Accolades up for grabs on the night included the Community Impact Award, Business in the Community Award, Volunteer of the Year (25+), Young Volunteer of the Year (under 24) and the Special Achievement Award.

The winners were announced at South Ribbles' Big Do, a community-wide networking event attended by local businesses, public sector organisations and voluntary, community and faith groups, held at Sunningdale Hotel.

They all received a glass trophy and VIP tickets to the Leyland Festival.

The categories were judged by a panel from the South Ribble Partnership, which organises the search and works to bring together people from across the public sector, businesses and voluntary and community organisations with its aim to deliver better services in the area, based on what local people want.

The partnership also offers small grants of up to £500 that can be spent on a range of activities and equipment.

To check the criteria and apply, visit: www.southribblepartnership.org.uk/funding-and-advice/grants

A special thank-you to the sponsors for 2014: Leyland Festival Committee, Progress Housing

local community through positive action
Winner: Keith Blackburn – Leyland Leader and Business Before Breakfast (pictured next)
Runner-up: Penwortham store

Volunteer of the Year (25+)
Honours an individual who has volunteered their time to make a difference in their local community
Winner: Martha Richardson
Runner-up: Keith Mervin, Claire Hewittson, Julie Chadwick

Young Volunteer of the Year (Under 24)
Awarded to a young person who has volunteered their time to make a difference in their local community
Winner: Rebecca Rodgers
Runner-up: Megan Jones, Ryan Cartwright, Katherine Greave

Special Achievement Award
Celebrates a person or organisation that has gone above and beyond the call of duty to make a positive impact in the borough
Winner: Andrew Bell – Chair of Wilton-to-Dale Recreational Society
Runner-up: Rebecca Ramage, Ann Leary, Leyland Playhouse

And the winners are:
Community Impact Award
Recognises a voluntary, community or faith sector organisation that has made a significant positive impact in South Ribble
Winner: Age Concern Central Lancashire (pictured above)
Runner-up: North West Blood Bikes Lancashire and Lakes, Help Direct – community based support team, Churches Together in Leyland

Business in the Community Award
Awarded to a socially responsible business which actively supports the

The Partnership continues to work closely with South Ribble Borough Council's Press Office and over the coming year have set a communications timetable to ensure all key events and work are effectively communicated to stakeholders and the wider community.



Finance

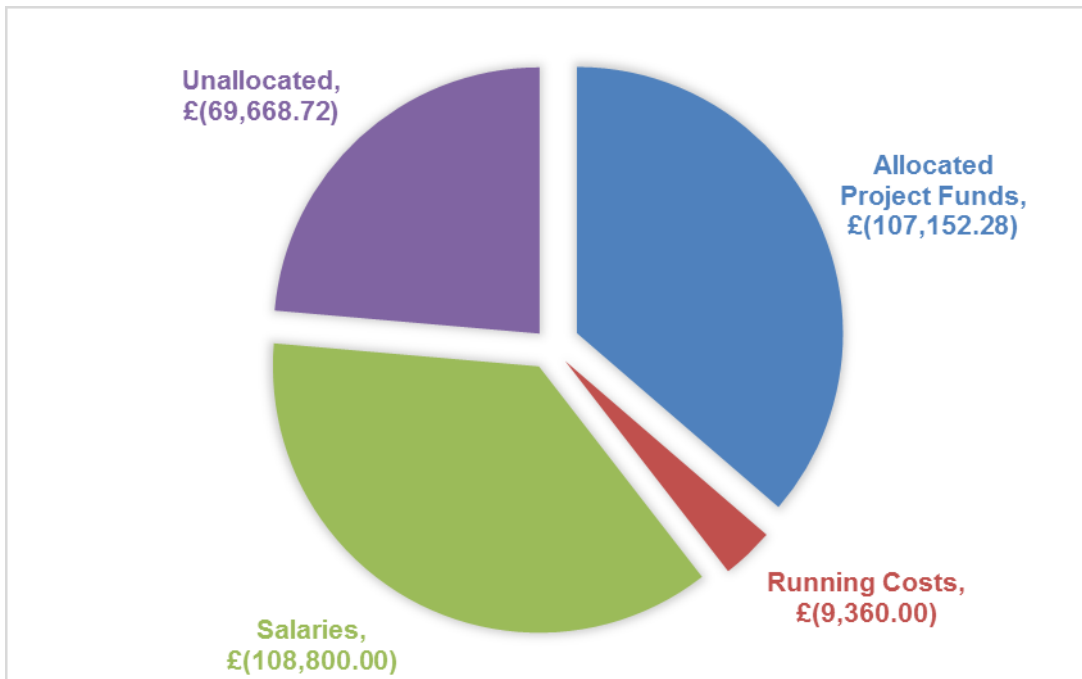
South Ribble Partnership's finances are managed by the Borough Council, as part of its role as the Partnership's accountable body. As such, officers provide effective stewardship of partnership funding and ensure compliance with all recommended accounting practice.

Performance Reward Grant

The Partnership is funded by 'Performance Reward Grant' (PRG) which was received in two phases from central government in recognition of achieving a range of targets within the Local Area Agreement.

In South Ribble, a total of £647,416 was received. The first phase of the Performance Reward Grant was made up of 50% revenue and 50% capital funding and the second phase was made up of 70% revenue and 30% capital and money must be spent in the same ratio. There is no time limit within which money must be spent.

A three year budget plan is in place, which runs up until March 2017. This plan includes daily operational costs, project work and salaries. A summary of the financial commitments and unallocated funds are below;



Partnership Budget Summary – From current until 2017

Partnership Staffing

When we last presented to Scrutiny, the Partnership was finalising its arrangements with regards to officer support. The roles of Partnership Manager and Funding Officer were merged, reducing the overall salary cost and resource required to operate.

As was stated at our last scrutiny review, this restructure enabled the Partnership to achieve efficiency savings of approximately £60,000; allowing the Partnership to redirect these savings into projects and initiatives that will be used to support delivery of the strategic aims.

As a result the Partnership has been able to invest in additional officer support to work exclusively to develop and grow the South Ribble Voluntary Community and Faith Sector Network.



Income to the Partnership

When we last met, we set out how the Partnership would seek to generate income to address issues of sustainability, following the removal of second homes council tax as a stream of revenue income.

We have started to address this and looked at revenue streams going forward. This has included;

1. External Funding applications to deliver projects
2. Supporting applications and providing funding/monitoring support
3. Sponsorship

Since we last met, a number of external funding applications have been submitted to support the work of the Partnership.

External Funding Application to Deliver Projects

Specific funding bids have been put together to help supplement the income of the partnership to deliver project work.

A total of £39,600 has been successfully bid for, to assist the partnership in delivering and managing projects it is directly working on.

North West Coast Academic Health Science Network (NWCASHN)

Supporting our work around co-location, and the impact of City Deal on local services, a proposal was submitted to the NWCASHN to develop business plans around co-locating services and organisations.

We were awarded £36,000 to recruit a consultant and develop the plans to put in place co-located services. The consultant has been appointed and detailed work is due to start imminently.

Police and Crime Commissioner

As part of the Better Together in the Home Project, and working jointly with Chorley Borough Council, a successful bid for £7,200 (£3,600 direct to SRP) was made to deliver home security and safety improvements to targeted areas of the borough.

Supporting Applications

We have also supported applications and where the expertise of the Partnership office is called upon by partnership members.

Coastal Communities Fund

Support was provided in the development and submission of a bid to The Coastal Communities Fund, to undertake regeneration and employment support work in the Longton area. A total of 131,700 for South Ribble Borough Council was secured and work has commenced.

As part of the support from South Ribble Partnership, the office will be undertaking the monitoring and evaluation of the programme and will be making a recharge from this as part of the project work.

Sponsorship

For certain events, to enable us to use Partnership resources as effectively as possible, we seek support from partners and local organisations in the form of sponsorship.

Big Do and Community Awards

We are very grateful to the sponsors of Big Do and the Community Awards, who help make the event possible. In 2015, we were able to secure £2041.65 in sponsorship, which helps towards the costs of the venue and purchasing of the awards.

Future Income

We will continue to look at ways of generating income to support the work of the Partnership as we move forward.

This will involve continuing to support funding applications from partners who need additional capacity and making a suitable charge for that support.

We will also continue to seek external funding to deliver our own work, making best use of our existing resources.



Projects

Since our last report a total of 10 projects have been commissioned/supported by South Ribble Partnership, totalling an investment of £135,029 into South Ribble's Communities. Each project is aligned to the priorities and aspirations set out in the Sustainable Community Strategy.



Key Highlights Include:



As of March 2014 – over £100,000 provided in grants to over 50 local voluntary, community and faith based groups across South Ribble.



The second and third South Ribble Big Do and Community Awards were a great success! There were over 200 attendees at each; developing the connections between local businesses, the community and the 3rd sector.



The Better Together in the Home Project was launched to develop an improved, joined-up approach to ensure South Ribble residents are aware of, and have access to the many services available to support them to maintain their health and wellbeing.



Community Bids Fund 'Lite' Launched to support the grassroots voluntary and community groups across South Ribble.



Continued working with the Council's My Neighbourhood teams to engage partners in community plans and support project delivery in local communities; including Longton Live and the Farington History Trail.



Continued to grow our presence on Social media. More than 100 'followers' on Twitter and Facebook helping to drive traffic to the Partnership's website and reach new groups of people with Partnership news.



With support from Partnership members Tots on Tyres (part of Cycle South Ribble) has now received sponsorship from HALFORDS enabling the purchase of lots of new bikes to introduce children to pedal bikes.



Since the last Scrutiny Review, a total of £279,077 of investment in the borough has been secured through external funding, via bids supported and developed by the Partnership.



Secured funding from the North West Coast Academic Science Health network to develop the business models for co-located facilities and closer working – ensuring services meet local demand and need in the most cost effective and efficient way



Key Projects Summary

1. **South Ribble VCFS Network** – Working with the Network, the Partnership has now recruited a VCFS Support Officer, who will be supporting the Network over the next two years.

Their role will be to develop the network, its membership and raise its profile across the sectors.

2. **Better Together in the Home** – This project was established to develop an improved, joined-up approach to ensure South Ribble residents are aware of, and have access to the many services available to support them to maintain their health and wellbeing. This was in response to Partner consultation and recommendations from the SRBC Scrutiny Committee report on Health Inequalities ‘Mind the Gap’.

The project is focused on 4 key themes;

- Home Security and Fire Safety
- Falls prevention
- Carers (support for)
- Dementia

There are 26 organisations engaged with the project attending network and information sharing events.

3. **Co-Location** – As part of the AGM process in 2014, Partners identified the need to take practical steps towards co-location of services.

The impact of City Deal will be to increase the burden on local services. As budgets and income for organisations across the public and third sector become reduced, the need to co-locate and share resources has become ever more pertinent.

A consultant has been recruited, who is tasked to develop a flexible business model that can be used to implement real change and establish co-located and shared services that meets the demands of residents.

This work will be undertaken over the next 12 months, with a full business plan and model then being used to secure the funding and resources needed to implement effective community hubs.

Partnership’s Supporting Role

It is important that the Partnership remains agile and flexible in order to meet new and emerging needs that arise in the Borough.

In 2014/15 the Partnership has supported a number of organisations in developing projects and grant applications where they sit outside of our planned activities, but support those key priorities identified by partners.

1. **Gregson Green Playing Fields** – Working with the Neighbourhood Forums, the Partnership developed a bid to Sport England, to the Protecting Playing Fields Scheme to resolve issues around drainage.

The proposal was successful and Sport England have awarded £56,000 to support the scheme. SRBC will be matching this sum together with the sports groups, which will resolve the long term issue around drainage. This will enable increased sporting participation at the site, and further support the efforts of the local community to construct a new community centre.

2. **Longton Coastal Communities Fund** – Supported and developed by the Partnership office, a successful application was made to the Coastal Communities fund which has brought in an additional £130,000 to the area for regeneration and businesses development support.

The Partnership will continue to be involved providing officer support to evaluate and monitor the project’s delivery and outcomes.





Big Do is South Ribble's largest cross sector networking event and encourages businesses large and small; charities, community groups and faith organisations; council, health & wellbeing providers and uniformed services to come together and make new connections and grow ideas.

Starting back in 2013, Big Do keeps getting bigger year on year. The event was well attended with over 200 guests; filling the room and browsing the exhibition space which was alive with people networking.



We had a number of guest speakers, which included Julie Thornhill from Waitrose and Stephen Greenhalgh of St Catherine's Hospice, who shared their thoughts and experiences around the role for business in supporting communities and sustaining charities.

This year's Big Do, saw the introduction of workshops around social media and marketing. These were well received and we will be looking to including these in future years.

South Ribble Community Awards

The final part of Big Do is The South Ribble Community Awards.

Six awards were handed out at the prestigious ceremony to the unsung heroes who go the extra mile to make our community in which we live a better place.



The Winners of the 2015 Community Awards

Business in the Community Award

Winner – BAXI

Volunteer of the Year

Winner – Joanne Duncan from TAAG

Community Impact Award

Winner – Churches Together in Leyland

Young Volunteer of the Year

Winner – joint winners Naomi Womack and Brian Ascroft

Special Achievement Award

Winner – Andy Wilson

Community Spirit Award

Winners – Marguerite Ralphs and Rob Cochrane



Community Bids Fund

The Partnership established the Community Bids Fund in 2010 to support local voluntary, community and faith based groups in South Ribble.

Since then, over £102,000 has been awarded to over 50 groups in the Borough which have delivered a huge range of different projects.

We are really proud of what Community Bids Fund has achieved in the past few years. They have achieved so much, with very little. It has helped local groups attract additional investment into the borough and improve their bid writing skills.

In 2014, the fund was refreshed to target and support some of the smaller groups within the borough.

Moving away from a period of set assessments throughout the year, the fund now assesses applications on submission and provides a response and decision within 8 weeks.

Providing grants of up to a maximum of £500, we have been able to continue supporting a wide range of projects, whilst simplifying the application process.

In line with refreshing the fund and to make it relevant to our local community groups, a set of priorities was agreed which the Community Bids Fund aims to achieve;

Our Priorities

1. Building Communities: bringing communities together to make decisions, supporting each other and breaking down barriers
2. Better Together: working with other groups and making new connections to deliver activities
3. Supporting Volunteers: providing opportunities for local people to volunteer, access training and development

We continue to promote the fund widely across the Borough via newsletters, websites, local newspapers, local radio and through the Council's Forward newspaper. Word of mouth also plays an important role in publicising the fund and South Ribble Partnership and

we would like to thank South Ribble Borough Council's elected members for their support in promoting the fund to people and groups in their local communities

Funded Projects in 2014

We funded 8 projects in 2014, the details of which can be found below;

Lostock Hall Juniors – Grant provided to support the development of coaches and volunteers - £500

Double R Arts – Funding provided to enable the group to deliver activities for the Leyland Festival - £309.98

Farington Parish Council – A contribution towards the costs of installing a commemorative garden as part of the First World War Centenary - £500

Leyland Rotary – Funding provided to support the Health MELA, promoting key health messages for local residents - £500

Woodcroft Residents Association – A new association, funding was provided to enable the purchase of equipment to promote social activities and enable digital learning - £472.95

Time4Craft – funding was provided to purchase craft materials and support the development of the group as it moves towards independence - £450

Lostock Hall Royal British Legion – To facilitate the Remembrance Day parade, funding was provided to enable road closures - £460

Churches Together in Leyland – A contribution towards the costs of delivering the range of services provided by the group, including a food bank, furniture scheme and credit union - £500

A full list of the projects funded by Community Bids since 2010 can be found in Appendix C.



Malt Kiln Fold Bridleway Opening



Lostock Hall Royal British Legion – Remembrance Day Parade



Leyland Scout Group - Access Improvements



Next Steps & Future Challenges

In Development

Following our annual general meeting towards the end of 2014, a number of key areas were highlighted by our partners, which as a partnership we have agreed to focus on and explore.

These areas are;

1. **Local Skills and Employment Curriculum** – We will be seeking to explore developing a local curriculum that provides residents and young people with the skills and education they need to gain employment and benefit from City Deal.

We are currently awaiting the outcome of a City Deal Skills study which will help inform the Partnership and enable us to develop a suitable proposal that supports the work of City Deal and the Lancashire Enterprise Partnership (LEP).

2. **Young People's Volunteering Opportunities** – We are currently investigating with the group of head teachers from across South Ribble, the opportunity to develop a volunteering and recognition scheme for young people; raising aspirations and improving wellbeing.

3. **Health – Self Care and Management** – Enabling people to self-manage their own care and to improve overall general health was seen as a priority by partners

We will be exploring with partners, how we can engage with local communities over health issues, in a non-clinical way.

- ENDS -



Appendix A. Partnership Projects Summary

Organisation & Project	Funding Allocated	Progress	Commentary
<p>South Ribble Partnership and South Ribble VCFS Network</p> <p>VCFS Support Officer</p>	£29,575	IN PROGRESS	<p>The project is a joint initiative between South Ribble Partnership and South Ribble VCFS Network, aimed at developing the network and its membership over the next two years.</p> <p>After having made an initial investment with financial and officer support, the partnership has further invested by recruiting a dedicated support officer to;</p> <ul style="list-style-type: none"> • lead in developing the network's membership and structure • raising its profile across the sectors • exploring methods of ensuring future sustainability
<p>South Ribble Partnership</p> <p>Better Together in the Home</p>	£1,400	IN PROGRESS	<p>Better Together in the Home is about developing an improved, joined-up approach to ensure South Ribble residents are aware of, and have access to the many services available to support them to maintain their health and wellbeing.</p> <p>The variety of services available can be difficult for organisations to understand and navigate. The project aims to create better links and improved knowledge across organisations; helping to facilitate an improved referral process to ensure residents get the support they need.</p> <p>The project focusses on four priority themes which are;</p> <ul style="list-style-type: none"> • Home Security and Fire Safety • Falls prevention • Carers (support for) • Dementia
<p>South Ribble Partnership</p> <p>Co-Location</p>	£36,000	IN PROGRESS	<p>This project is focused on developing the business plans and models required to implement and site co-located facilities and joint working practises; making better use of resources and long-term sustainability of services.</p> <p>Funded by North West Coast Academic Science Health Network, these business cases will then be used to secure the required investment from partners and the City Deal,</p>



Organisation & Project	Funding Allocated	Progress	Commentary
			to invest in the required infrastructure, to support communities.
South Ribble Partnership Community Bids Fund	£10,000	IN PROGRESS	Community Bids Fund continues to provide small grants to local community, voluntary and faith based groups. Grants are assessed on a rolling basis, and can be used to support a wide range of activities and projects.
South Ribble Borough Council My Neighbourhoods	£15,000.00	IN PROGRESS	Funding allocated to support the delivery of projects included in South Ribble's My Neighbourhood Plans. The plans were developed in conjunction with local communities and include 10 priority projects for each of the 5 My Neighbourhood areas in South Ribble (Central, Eastern, Leyland, Penwortham & Western Parishes). To date this funding has supported; <ul style="list-style-type: none"> • Activities for Children and Young People in Leyland • Community Notice Boards throughout Leyland • Improvements to Hurst Grange Park Penwortham • Delivery of Longton Live
South Ribble Big Do and Community Awards	£1,500	ONGOING COMMITMENT	The South Ribble Big Do event brings together organisations from across the public, private and voluntary sectors for two main purposes: <ol style="list-style-type: none"> 1. to network, make new contacts and build new relationships 2. to promote the local economy, local businesses, South Ribble Partnership, etc It also serves to promote the value of volunteers and recognise local businesses and individuals who give selflessly to the community via the South Ribble Community Awards.
South Ribble Borough Council South Ribble Cycling	£18,440.00	COMPLETE	Funding was allocated to support a two year programme that promotes and increases participation in cycling activities in South Ribble. The programme is now in its second year and is performing exceptionally well. The project provides an inclusive programme to support and encourage participation across all age groups in all areas of the borough. The funding is being used to deliver the infant programme 'Tots on Tyres' and to support the



Organisation & Project	Funding Allocated	Progress	Commentary
			coordination of the entire project and to identify and address any gaps in provision.



Appendix B – Sustainable Community Strategy Work Programme

Our Vision	“Working better together to make South Ribble and its communities great places to live, work, visit & play – places to be proud of and places where everyone has equal opportunity to contribute and to reach their full potential.”			
	Project Title and Description	Lead Organisation	Other Partners	Project Start
Working Better Together we will..	Community Bids Fund helps to deliver our priorities by funding community-based projects that will make a real difference to the lives of local people and overcome real challenges faced by local communities. The fund flexible and willing to support a wide variety of ideas from a whole range of organisations.	South Ribble Partnership Office	South Ribble Borough Council Lancashire County Council BAE Systems	April 2010 Re-launched April 2014
	My Neighbourhood Forums – Support to implementation of neighbourhood Plans (carried forward from My Area Plans)	South Ribble Borough Council		Ongoing
	South Ribble VCFS Network - Provide 2 years support to grow and develop the South Ribble VCFS Network; strengthening the sector and building capacity	South Ribble Partnership Office and South Ribble VCFS Network	CCG, SRBC, CAB, ACCL, Home Start, Community Futures	Jan 2015
	Better Together in the Home - joined-up approach to ensure South Ribble residents are aware of and have access to the many services available to support them to maintain their health and wellbeing.	Preston Care and Repair / Progress Housing Group	CCG, SRBC, Galloways, LCC, ACCL, Central & West Lancs Carers, Arthritis Care, United Response....	April 2014 - Ongoing
	Co-Located / Joint Facilities – developing the business plans and models required to implement and site co-located facilities and joint working practises; making better use of resources and long-term sustainability of services.	South Ribble Partnership Office / South Ribble Borough Council	CCG, Police, LFRS, Progress Housing, CAB, ACCL,	April 2015
	Supporting Partner Funding Bids - Achieve external investment within South Ribble to realise community projects and aspirations	South Ribble Partnership Office	(All Partners)	Ongoing
	Big Do - Supporting greater networking across the sectors, making new connections and developing relationships.	South Ribble Partnership Office / South Ribble Borough Council	(All Partners)	Jan 2015 – Jun 2015
	The South Ribble Community Awards - Recognising local communities and their champions.	South Ribble Partnership Office	(All Partners)	Feb 2015 – Jun 2015
	Local Skills and Employment Curriculum - Developing a local curriculum that provides residents and young people with the skills and education they need to gain employment and benefit from City Deal	In Development Process		
	Young People’s Volunteering Opportunities – Working with local schools to explore and develop a volunteering and recognition scheme for young people; raising aspirations and improving wellbeing.	In Development Process		
Health – Self Care and Management – Assisting people to self-manage their own health and care by providing the tools and education required. Focus will be on health literacy and ‘food’ as an engagement tool.	In Development Process			



Appendix C – Community Bids Fund Projects List

In order of year of award:

2010/2011

Group	Project	Awarded
Samlesbury War Memorial Hall	Hall Refurbishment	£1,000
Fusion Youth and Community	Youth Café	£2,315
St Saviours Parish Church	Faithworks4all	£1,000
Longton Victory Memorial Sports and Social Club	Junior Bowling League	£2,160
Walmer Bridge Village Hall	Disabled Parking Facilities	£1,750
St Aiden's CE Primary School	Link Path Project	£4,150
The Leyland Project	Community Lunch Club	£237
Leyland St Mary's Scout Group	Disabled Toilet Installation	£3,500
South Ribble Arts Forum	Chinese New Year	£1,500
Chorley & South Ribble CAB	Manage Your Money Better	£2,980
Lancashire Wildlife Trust	South Ribble Trail Guide	£1,000
South Ribble Transition Towns	Communication & Engagement	£1,947

2011/2012

Group	Project	Awarded
South Ribble Disability Forum	REACH Event	£500
Preston & South Ribble Street Pastors	Street Pastors Volunteer Rec.	£5,700
The Leyland Project	Dreamscheme	£1,408
Friends of Hurst Grange	New Heather Bed	£295
Worden New Stage Youth Theatre	Core Costs	£1,408
Higher Walton Bowling Club	Green Edge Project	£2,000
Leyland St. Anne's Brownies	Kitchen Refurbishment	£300
Bashall Grove Courtyard Allotments	Development Costs	£455
New Longton Cricket Club	Net and Training Refurb.	£4,500
South Ribble Cricket Development Group	Go Play Kwik Cricket	£4,000
United Reformed Church	Hall Refurbishment	£1,374
Walmer Bridge Village Committee	Walmer Bridge 'Bridge'	£1,000

2012/2013

Group	Project	Awarded
Red Rosettes	The 'Rise' of the Rosettes	£1,000
Penwortham Gentle Exercise Class	Core Costs	£300
Longton Community Church	Inside Out	£3,500
Walton Le Dale Recreation Society	Kitchen	£3,000
Samlesbury War Memorial Hall	Energy Efficiency Imp.	£3,200
Double R Arts	Powerforce	£900
Broadfield Community Association	The Broadfield Base	£1,348
Work Club Penwortham	Additional Sessions	£4,650
Valley Tots	Start-up of 'Valley Tots'	£541
North West Blood Bikers	Blood Bikers	£1,000
Leyland St Mary's Scouts	Scouting For All	£2,500
Calvary Christian Fellowship	CAP Debt Counselling	£4,840
Leyland Barracudas	Membership & Performance Dev.	£3,419
Step into Music	Start Up and Session delivery	£1,000
Teenage Autism and ADHD Group (TAAG)	TAAG Trampolining	£1,000



2013/2014

Group	Project	Awarded
Chorley, South Ribble Crossroads Care	Dementia Friendship Circle	£1,418
Key	Furniture	£2,600
Lancashire Community Finance	Business Start-up Loans	£1,725
Longton Methodist Church	Let There be Light	£2,875
Preston and South Ribble Street Pastors	Volunteer Rec.	£4,500
Ulnes Walton Bridleway Assoc.	Reinstatement of Lostock Valley Bridleway	£1,500
Grassroots Bamber Bridge	Grassroots Family Support Project	£500
Work Club Penwortham	The Work Club – Phase 2	£4,500
Women’s Institute Longton	Longton WI Hall Energy Efficiency Project	£2,775
Disability Equality North West	Chorley and South Ribble Disability Forum	£1,200
St James Scout Group	Camp 2014	£500



How to get in touch

Visit our website:



www.southribblepartnership.org.uk

Join us on Facebook:



www.facebook.com/southribblepartnership

Follow us on Twitter:



www.twitter.com/srpartnership

Give us a call:



01772 625546

Send us an e-mail:



partnership@southribble.gov.uk

Send us a good old-fashioned letter:



South Ribble Partnership
c/o Civic Centre
West Paddock
Leyland
PR25 1DH





South Ribble Partnership is the Local Strategic Partnership for South Ribble. We bring together people from across the public sector, businesses and voluntary and community organisations with an aim to deliver better services in South Ribble, based on what local people want.

For more information about South Ribble Partnership and South Ribble's Sustainable Community Strategy visit our website or contact the partnership office:

South Ribble Partnership
Civic Centre
West Paddock
Leyland
PR25 1DH

Telephone: 01772 625546

Email: partnership@southribble.gov.uk



SOUTH RIBBLE PARTNERSHIP
www.southribblepartnership.org.uk